



14 August 2009

Manager Announcements
Company Announcements Office
ASX Limited
20 Bridge Street
Sydney NSW 2000

Dear Sir,

PRESENTATION

Attached is a copy of a presentation to the NSW Mineral Exploration and Investment Conference in Sydney.

A copy of this presentation will also be available on the Company's website www.alkane.com.au.

Yours faithfully,
for **ALKANE RESOURCES LTD**

D I Chalmers
Managing Director



ALKANE RESOURCES LTD

ABN 35 000 689 216

Progressing to Development Tomingley and McPhillamys Gold Projects

***NSW Mineral Exploration and Investment Conference
Sydney 14 August 2009***

www.alkane.com.au

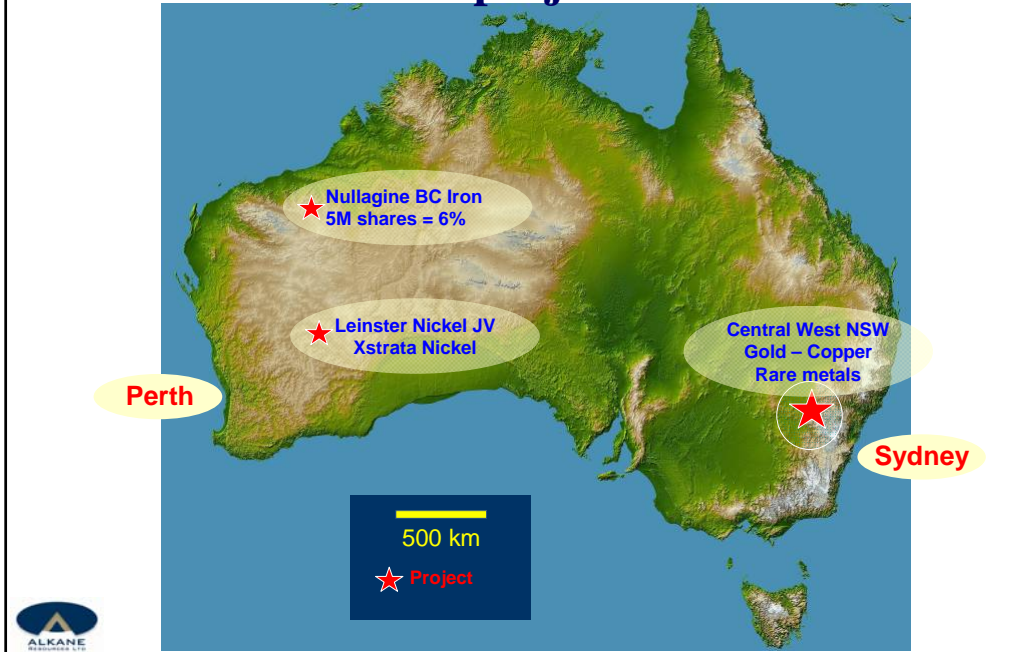


CORPORATE PROFILE

- ASX Code ALK (listed since 1969)
- Issued Capital 244.6m shares
- Cash (31/07/09) ~A\$7.0m
- Investments: BC Iron ~A\$5.0M
- Trading Range (1 yr) A\$0.15 - \$0.515
- Trading Volume (1 yr) average about 3m/mth
- Current Market Cap ~A\$70m
- Abbotsleigh (Gandel Metals) 29.1%
- No Debt



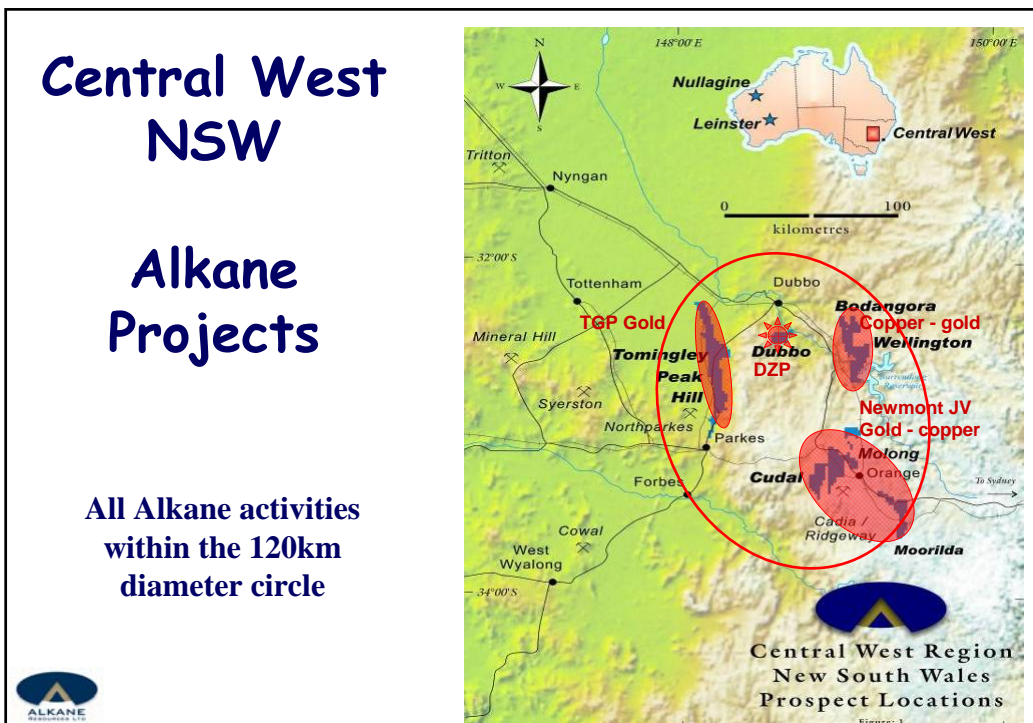
Australia – project locations



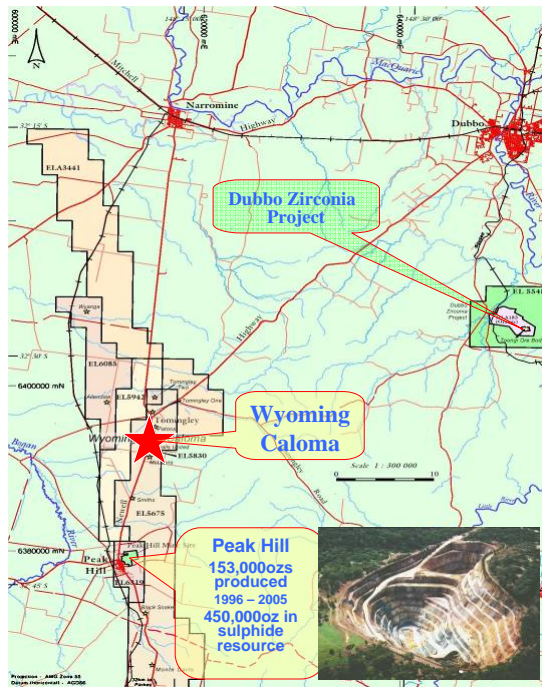
Central West NSW

Alkane Projects

All Alkane activities within the 120km diameter circle

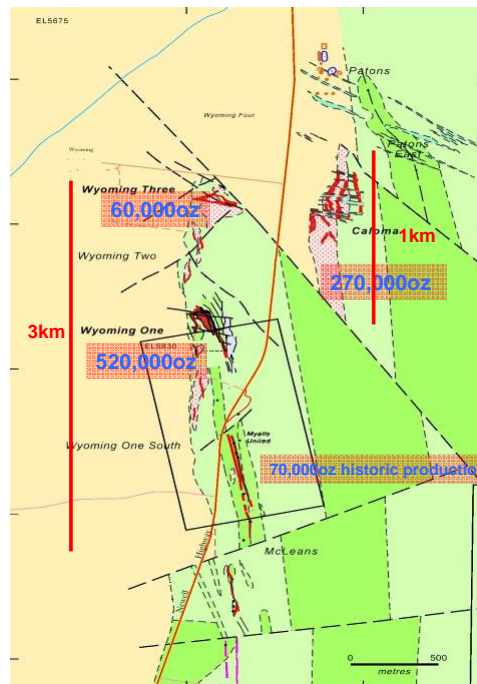


Tomingley Gold Project and Dubbo Zirconia Project Location




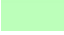




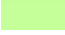


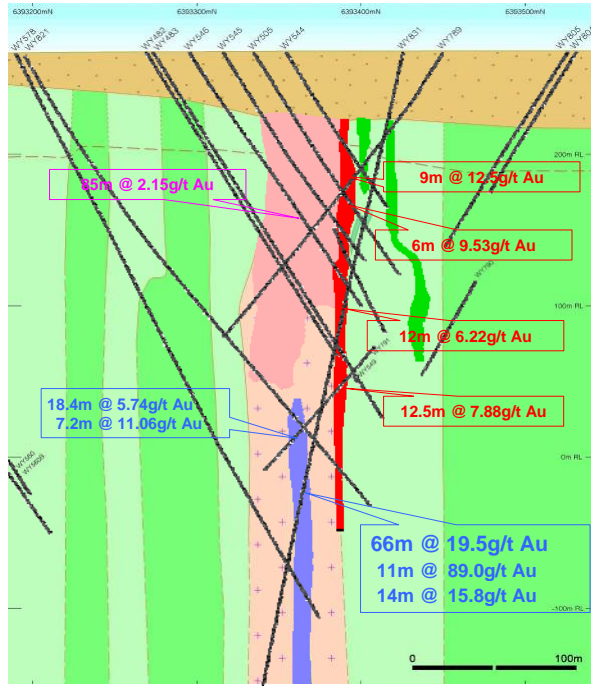
Tomingley Gold Project Geological Summary Wyoming - Caloma

- Pelitic Sediments
- + Feldspar porphyry
- Volcaniclastic sediments
- Graphitic mudstone
- Volcaniclastic conglomerate
- Epidote altered volcanics
- Chlorite-talc schist
- Andesitic volcanics
- Mineralisation




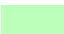


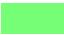

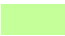


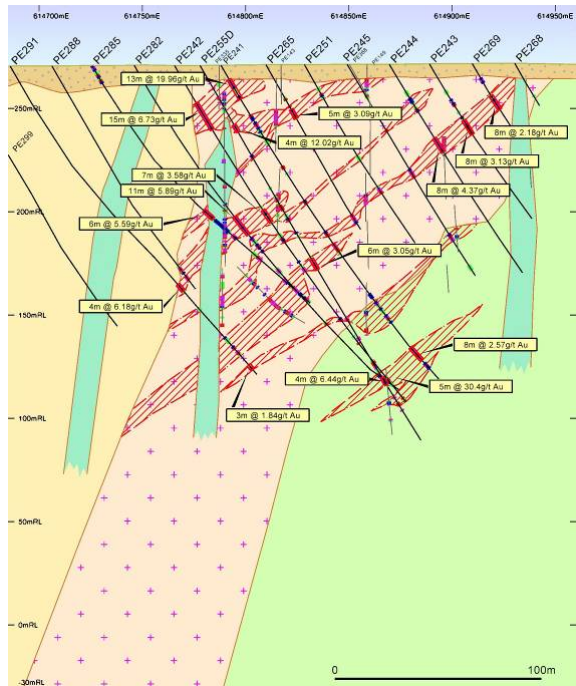
Tomingley Gold Project
Wyoming One
 North - South Section
 614075mE

-  Alluvium
-  Cotton Formation
-  Feldspar porphyry
-  Volcaniclastic sediments
-  Graphitic mudstone
-  Volcaniclastic conglomerate
-  Epidote altered volcanics
-  Chlorite-talc schist
-  Andesitic volcanics



Tomingley Gold Project
Caloma
 East - West Section
 6394140

-  Alluvium
-  Cotton Formation
-  Feldspar porphyry
-  Volcaniclastic sediments
-  Dolerite
-  Volcaniclastic conglomerate
-  Epidote altered volcanics
-  Chlorite-talc schist
-  Andesitic volcanics



Tomingley Gold Project: Caloma RC Drilling March 2008



TOMINGLEY GOLD PROJECT

Resource Summary Wyoming One and Three, Caloma March 2009
0.75g/t gold cut off.

DEPOSIT	MEASURED		INDICATED		INFERRED		TOTAL		
	Tonnage	Grade	Tonnage	Grade	Tonnage	Grade	Tonnage	Grade	k Ounces
mgeol model	(t)	(g/t)	(t)	(g/t)	(t)	(g/t)	(t)	(g/t)	
Wyoming One	2,379,000	2.52	878,000	3.07	3,227,000	2.35	6,484,000	2.51	523.2
Wyoming Three	670,000	2.05	44,000	2.02	123,000	1.64	837,000	1.99	53.5
Caloma	1,842,000	2.28	497,000	2.12	1,731,000	1.85	4,070,000	2.08	271.9
Total	4,891,000	2.37	1,419,000	2.70	5,081,000	2.16	11,391,000	2.32	848.6

Block models with no top cut



TOMINGLEY GOLD PROJECT

Resource Summary Wyoming One and Three, Caloma March 2009
0.75g/t gold cut off.

DEPOSIT	MEASURED		INDICATED		INFERRED		TOTAL		
	Tonnage	Grade	Tonnage	Grade	Tonnage	Grade	Tonnage	Grade	Ounces
2.5x2.5x5.0m model	(t)	(g/t)	(t)	(g/t)	(t)	(g/t)	(t)	(g/t)	
Wyoming One	2,227,000	2.07	882,000	2.25	3,478,000	1.62	6,587,000	1.86	393.2
Wyoming Three	630,000	1.87	58,000	1.73	154,000	1.25	842,000	1.75	47.3
Caloma	1,825,000	2.06	488,000	1.88	1,559,000	1.52	3,872,000	1.82	226.6
Total	4,682,000	2.04	1,428,000	2.10	5,191,000	1.58	11,301,000	1.84	667.0

Block models with top cut



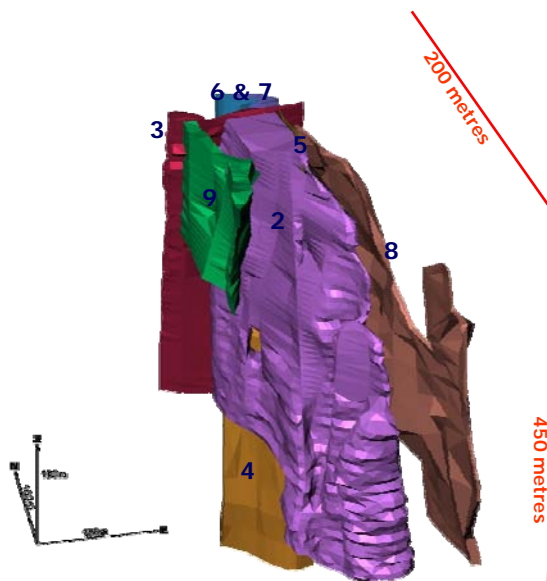
Tomingley Gold Project

Wyoming One

3D Model

Ore Zones

- 2 Porphyry
- 3 376
- 4 831
- 5 Contact
- 6 North 1
- 7 North 2
- 8 Hangingwall
- 9 Footwall

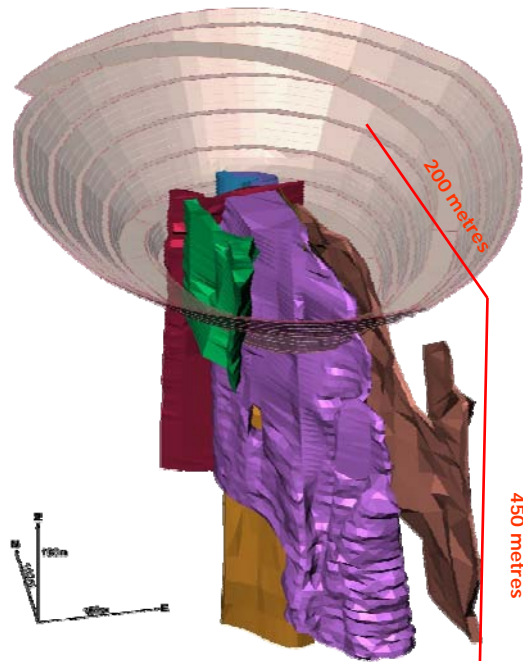


Tomingley Gold Project
Wyoming One

3D Model
with
Planned Open Pit

Approximately 35% ore
recovered from pit.

Remainder subject to
underground development
review

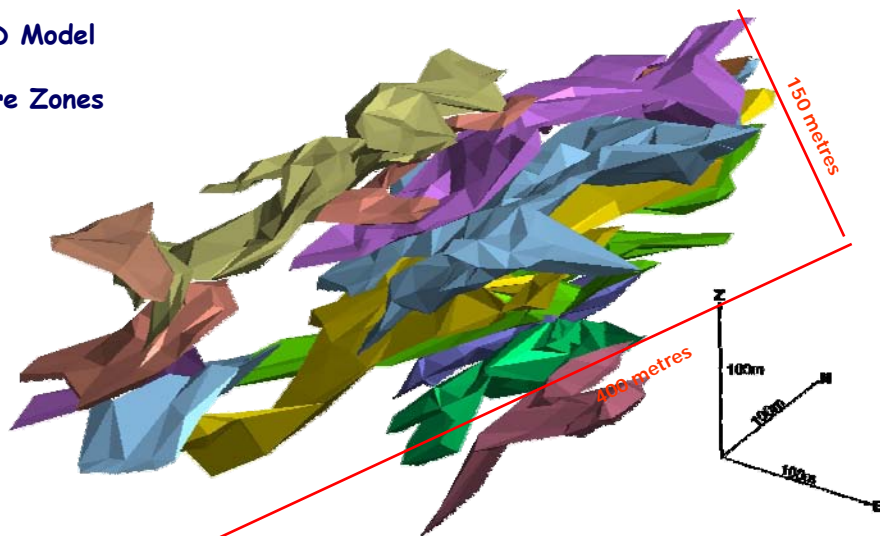


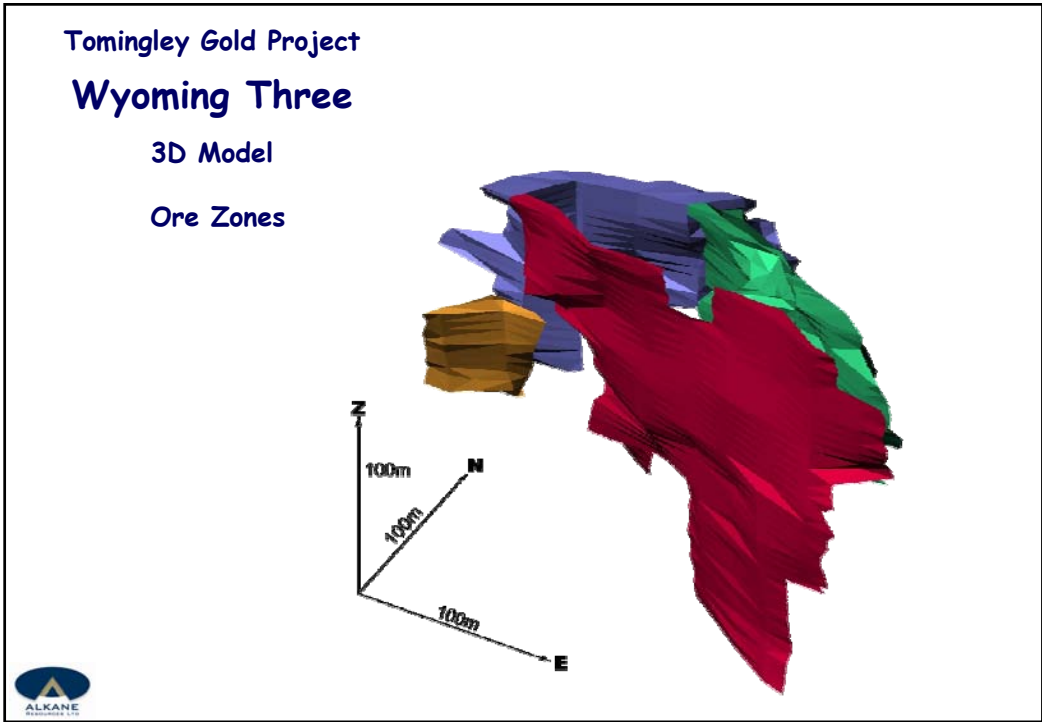
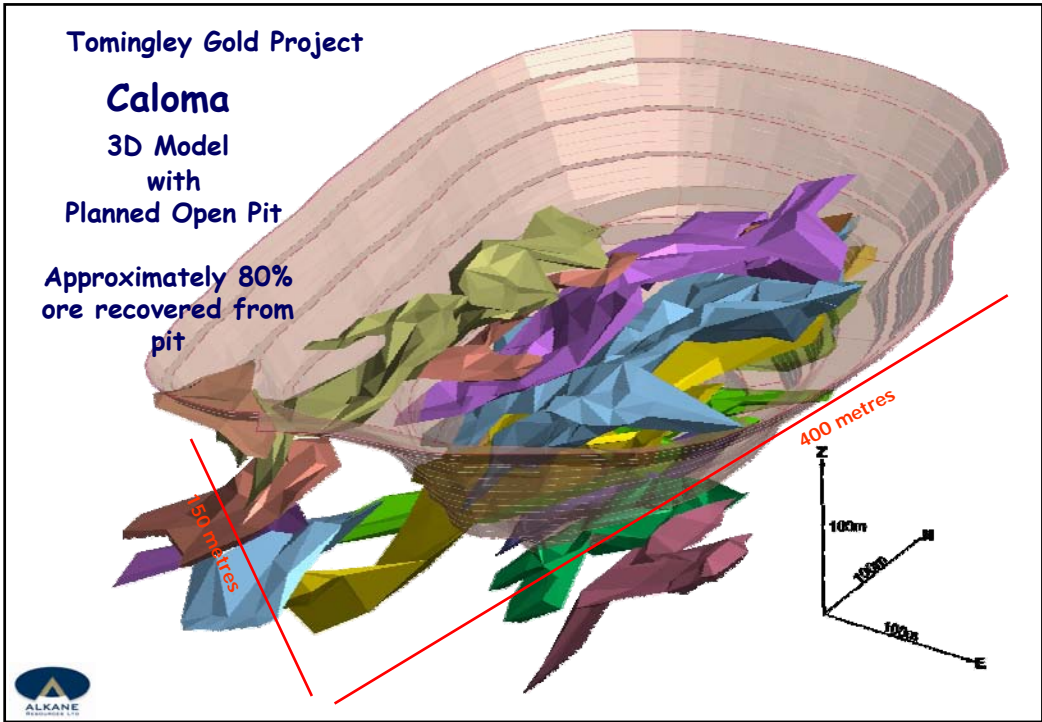
Tomingley Gold Project

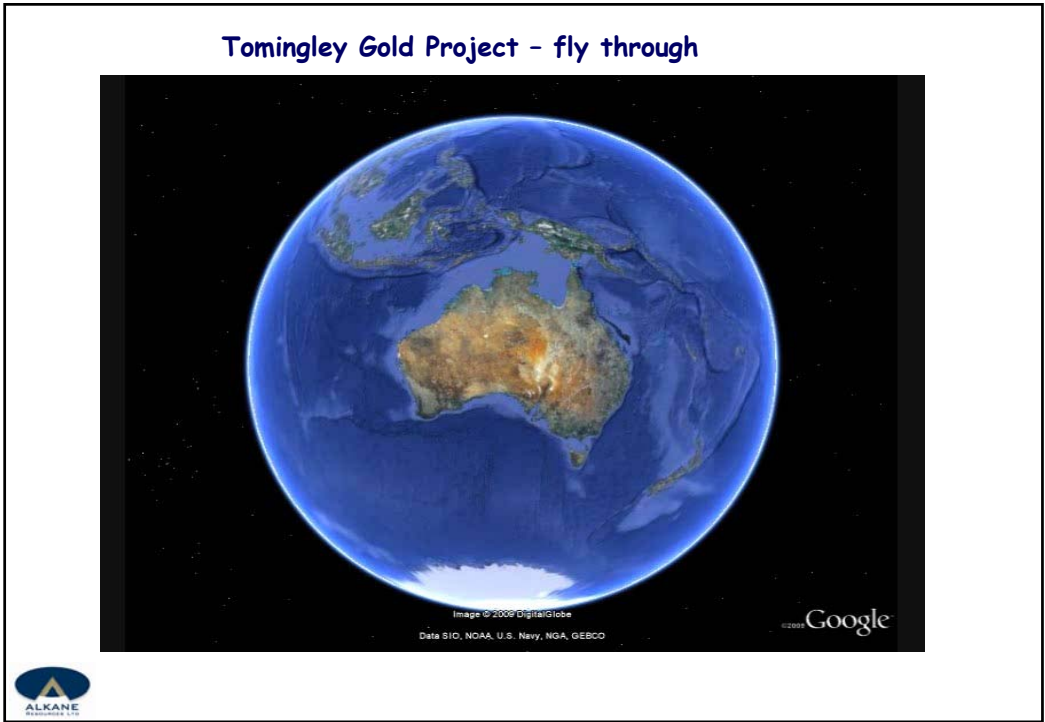
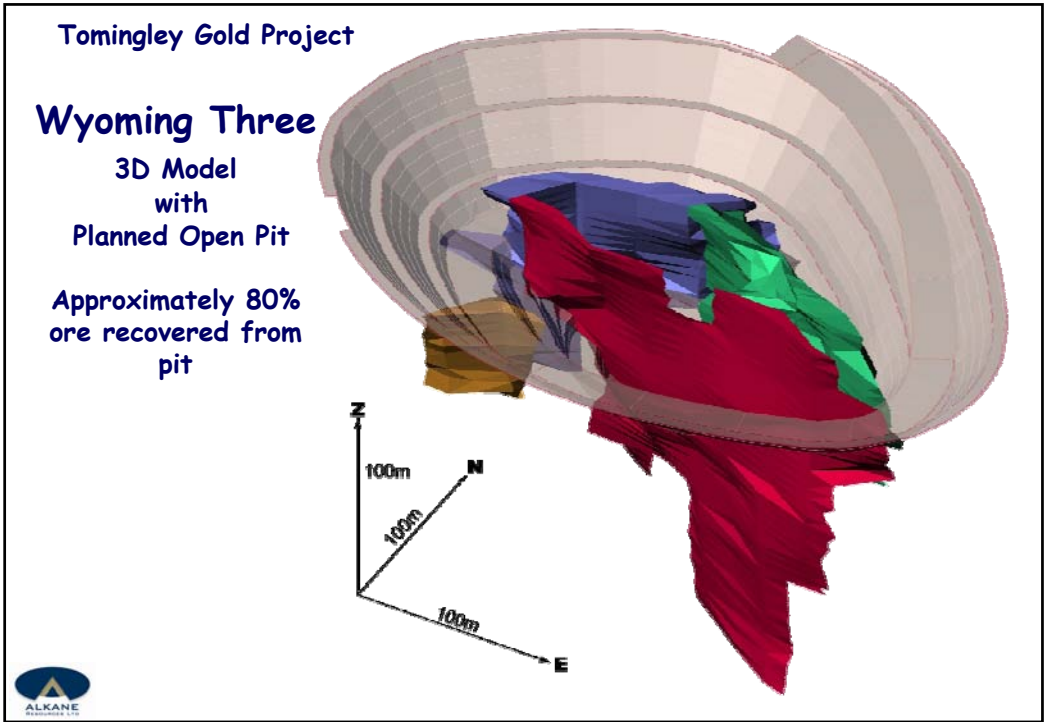
Caloma

3D Model

Ore Zones





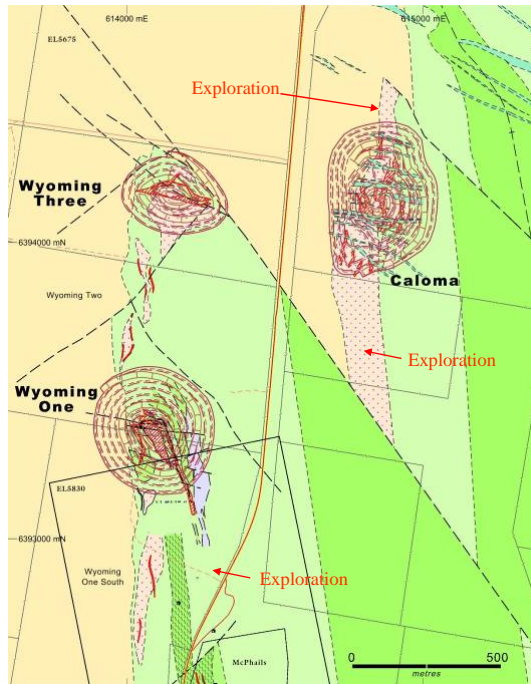


**Tomingley Gold Project
Wyoming - Caloma
Proposed
Pit Locations**

Caloma open below 200m vertical depth for underground potential

Mineralisation open along strike to the north and south

Wyoming One open at depth and south towards Myall United



TOMINGLEY GOLD PROJECT

Development Summary

Definitive Feasibility Study program well advanced, and scheduled for Oct 2009

Program includes Caloma resource compilation (complete)

Revamp of Wyoming One and Wyoming Three resources (complete)

Metallurgical complete and +90% recoveries from standard gravity
CIL gold circuit, with average to above average crush/grind/chemical consumption

Mine planning and scheduling in progress

Design and engineering for CIL treatment plant in progress, with Capex and Opex

Land access nearly finalised; water supply being finalised; power supply progressing

Complete Environmental Assessment and lodge Development Application Q4 2009

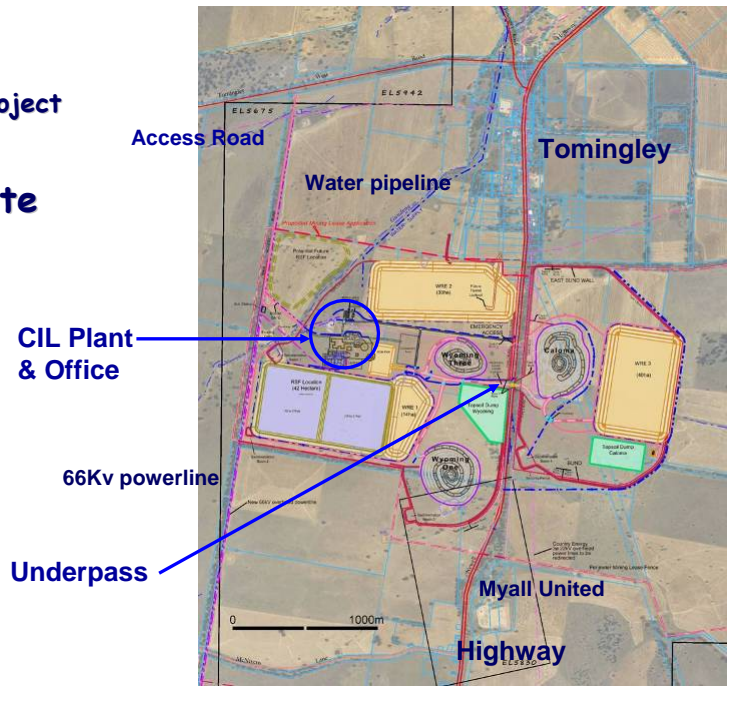
Investigate financing options, and development decision Q3 2009

Production anticipated Q1 2011



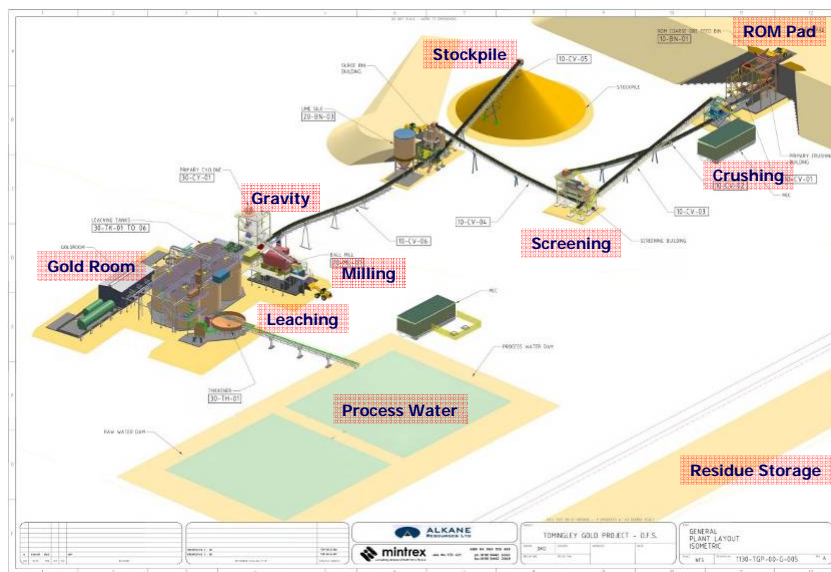
Tomingley Gold Project

Proposed Site Layout

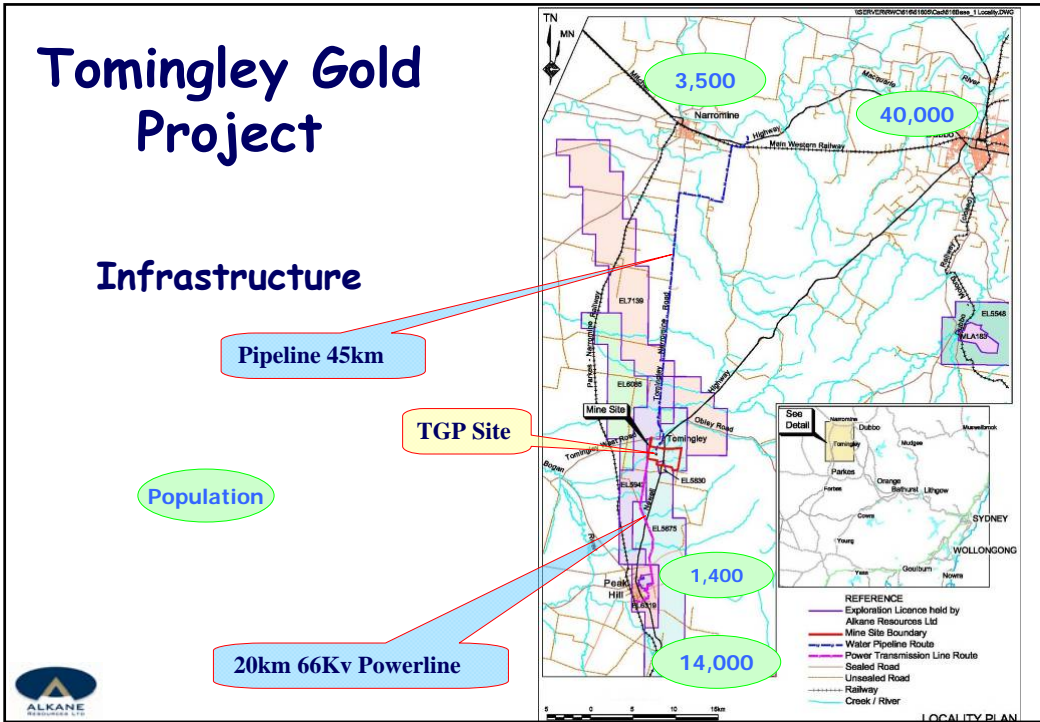


TOMINGLEY GOLD PROJECT

Treatment Plant



		TOMINGLEY GOLD PROJECT - D.F.S. GENERAL PLANT LAYOUT 100-100-00-005
--	--	---



TOMINGLEY GOLD PROJECT

Possible Project Economics

Current Concept: 0.75 to 1Mtpa open pit to produce an average 50-60,000oz pa
 Capital cost A\$60 million+/- 20%

Target 10 year life;
 with minimum five year open pit life;
 + five year conceptual underground 250,000 to 500,000 tpa

Cash costs ~A\$700/oz
 (state grid power; no fifo; reducing fuel and people costs)

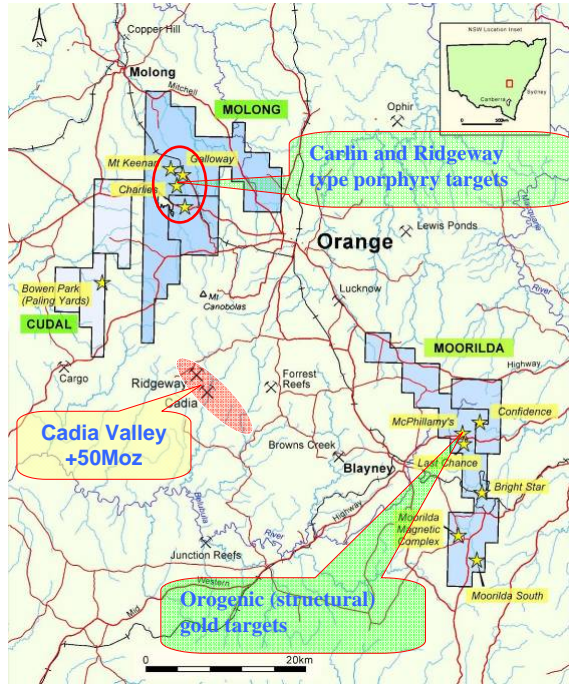
Operating margins @ 1Mtpa A\$20 - 25Mpa at A\$1150/oz



Orange Area Regional Location

**Newmont Joint
Venture
Molong and Moorilda**

NMA has earned its initial
51% interest after +A\$5M exp
Must make a decision by 28
Feb 2010 to go 75% by
carrying all expenditures to
final BFS



ODEJV Moorilda




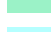


Geology and Prospects

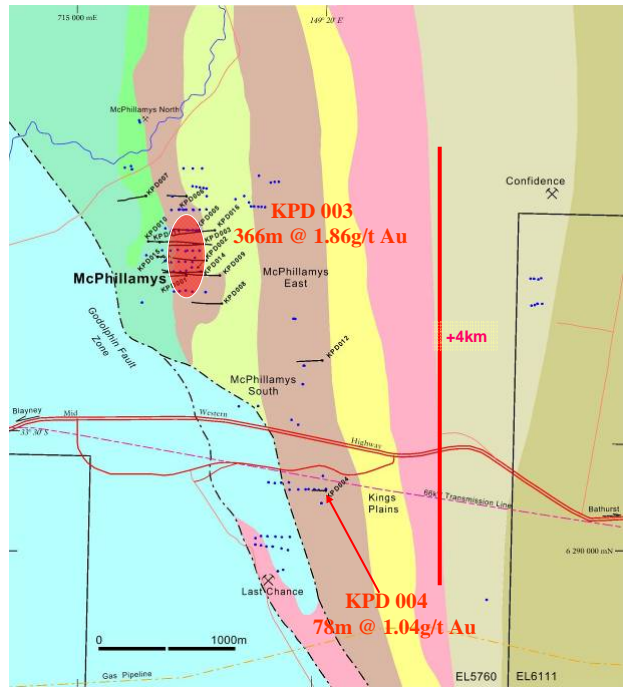
- Tertiary
- Granites [Carb-Sil + Ord Monzonite]
- Siluro-Devonian volcanics and sediments
- Ordovician volcanics

20km Target corridor



ODEJV
Moorilda
McPhillamys
Regional Geology

-  Undifferentiated sediments (Devonian)
-  Undiff felsic to intermediate volcanics
-  Foliated siliciclastic phyllite
-  Rhyodacite volcanics
-  Intermediate volcanics
-  Intermediate volcanics and intrusives
-  Intensely foliated polymict breccia
-  Intensely foliated sericitised phyllite
-  Mafic volcanoclastic and volcanics
-  McPhillamys target



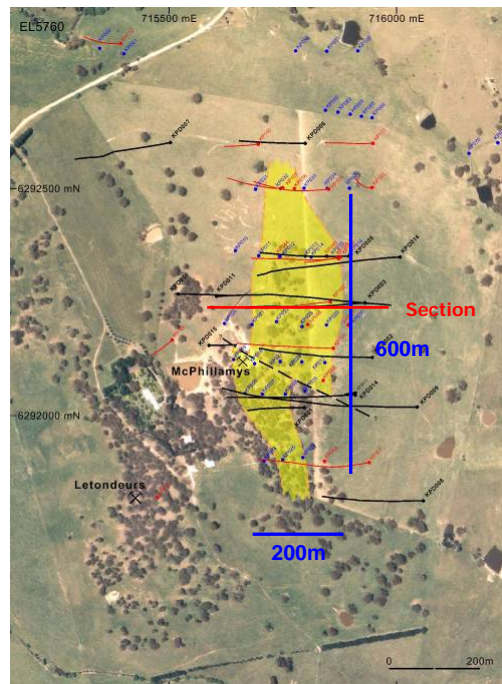
ODEJV
Moorilda

McPhillamys







**Drill hole locations
with 0.5g/t Au
outline**

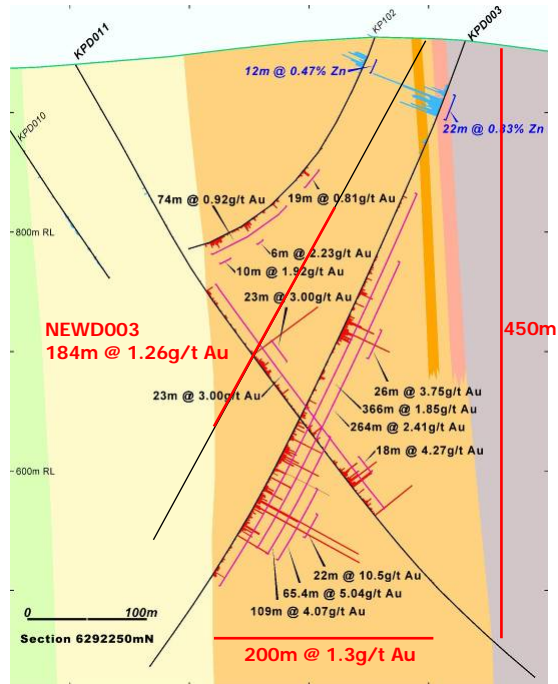
2009 Drill intercepts

- NEWD001 135m @ 1.00g/t Au
incl 119m @ 0.91g/t Au
- NEWD002 299m @ 1.09g/t Au
incl 207m @ 1.38g/t Au
and 30m @ 3.21g/t Au
- NEWD003 184m @ 1.26g/t Au
incl 91m @ 1.76g/t Au



**ODEJV
Moorilda
McPhillamys
Drill Section
6292250mN**

-  Strongly foliated dacitic schist
-  Med-coarse grained dacitic volcaniclastic
-  Coarse grained volcaniclastic conglomerate (Epiclastic)
-  Intensely sericite-altered schist
-  Gold histogram
-  Zinc histogram



**ODEJV Moorilda
McPhillamys Conceptual Target Size**

Basic area currently defined at + 1g/t gold ~ 500m x 150m x 85% = 64,000m²

To vertical depth of 400m = ~25 million m³

Tonnage @ 2.8 sg = ~70 million tonnes

Grade @ 1.0g/t gold = ~2.3 million oz
@ 1.5g/t gold = ~3.5 million oz

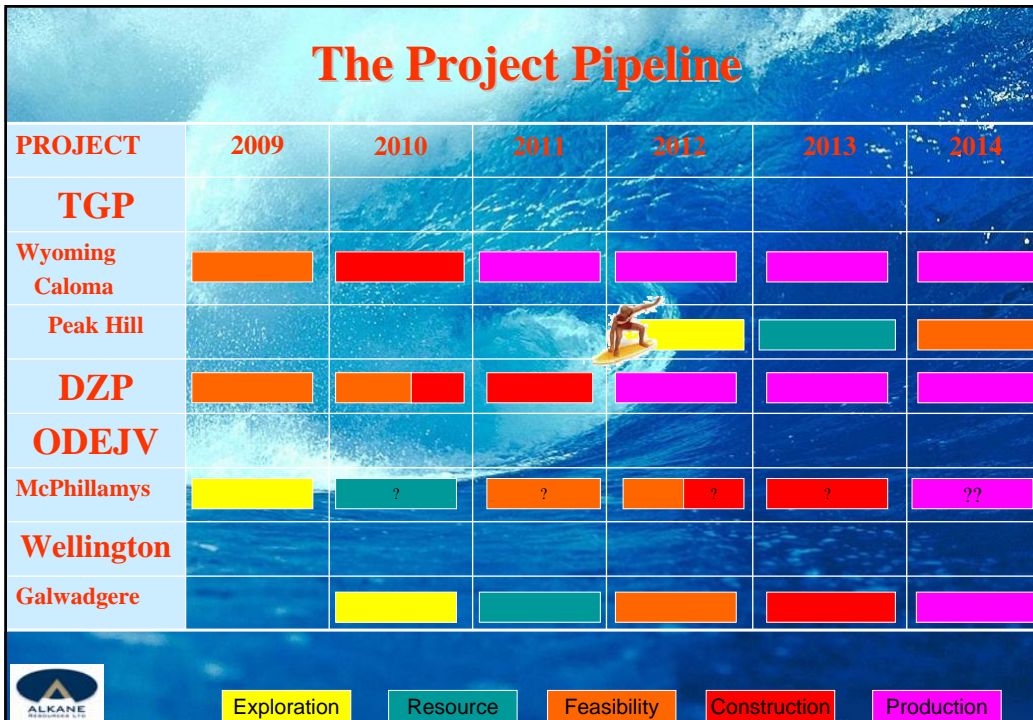
The +0.5g/t envelope is open to the north and south

Regional mineralisation extends over 4km and possible as much as 10km

Preliminary metallurgical scoping indicates +90% gold recovery from CIL
Geometry would suggest low waste to ore ratio to significant depth



ODEJV McPhillamys Project: RC Drill August 2008





ALKANE RESOURCES LTD

ABN 35 000 689 216

***Multi Commodity
Development
in the Central West of
NSW***



Yttrium "powered" compact fluoro light

Disclaimer:

This presentation contains certain forward looking statements and forecasts, including possible or assumed reserves and resources, production levels and rates, costs, prices, future performance or potential growth of Alkane Resources Ltd, industry growth or other trend projections. Such statements are not a guarantee of future performance and involve unknown risks and uncertainties, as well as other factors which are beyond the control of Alkane Resources Ltd. Actual results and developments may differ materially from those expressed or implied by these forward looking statements depending on a variety of factors. Nothing in this presentation should be construed as either an offer to sell or a solicitation of an offer to buy or sell securities.

Competent Person:

The information in this presentation that relates to mineral exploration, mineral resources and ore reserves is based on information compiled by Mr D I Chalmers, FAusIMM, FAIG, (director of the Company) has sufficient experience which is relevant to the style of mineralisation and type of deposit under consideration and to the activity which he is undertaking to qualify as Competent Person as defined in the 2004 Edition of the Australasian Code for Reporting of Exploration Results, Mineral Resources and Ore Reserves. Ian Chalmers consents to the inclusion in the presentation of the matters based on his information in the form and context in which it appears.