



Multi-Commodity | Miner | Explorer



Tomingley Gold Operations (TGO)



At a Glance

INDUSTRY: Mining
SECTOR: Materials, gold, zirconium, niobium, rare earths

Contacts

Ian Chalmers
Managing Director
+61 8 9227 5677
ichalmers@alkane.com.au

Natalie Chapman
Corporate Communications Manager
+61 418 642 556
nchapman@alkane.com.au

Ian Westbrook
Media and Investor Relations
+61 407 958 137
ian.westbrook@hkstrategies.com

Directors & Management

John Dunlop (Chairman)
BE (Min), MEngSc (Min). Mining Engineer

Ian Chalmers (Managing Director)
MSc. Geologist

Ian Gandel (Director)
LLB, BEc. Businessman

Anthony Lethlean (Director)
BAppSc. Geologist

Karen Brown (Company Secretary)
BEc

Michael Ball (Chief Financial Officer)
BCom CA

Nic Earner (Chief Operations Officer)
BEng Hons

Sean Buxton (TGO Operations Manager)
BEng

Natalie Chapman
(Corporate Communications Manager)
BSc (hons) MBA

© 2017 Alkane Resources Ltd

Alkane is focused on a single geographic area, the Central West of New South Wales, and has been active in the region for over 25 years. This has given Alkane an understanding of the geology and a place within the local community. The work over this time has spanned gold mining, exploration and, currently, the development of two significant resource projects – the Tomingley Gold Operations which started production in February 2014; and the Dubbo Project (DP) which will be a strategic and significant supply of zirconium, hafnium, niobium and the full suite of rare earths.

TGO production started in February 2014

Located 1km from Tomingley and 50km southwest of the city of Dubbo, the TGO was based upon four deposits with a total near 1Moz of gold.

Operations

Construction of the 1Mpa plant and associated infrastructure commenced soon after the mining lease was granted in February 2013 and was commissioned in January 2014. Total expenditure came in under the budget of A\$116 million, which included the EPCM and contingencies. The Project had no debt and was financed internally from existing shareholder funds.

The plant comprises a standard two stage crushing and grinding circuit, with gravity and carbon-in-leach gold recovery. Total ore feed is approximately 25% oxide and 75% fresh with an average 93% recovery. Power is supplied through the State electricity grid at Peak Hill and water sourced from a company bore near Narromine, 45km north of the mine site. The workforce of 180 staff and contractors have been recruited locally and there are no fly-in, fly-out personnel.

First gold was poured in February 2014. Contract pre-stripping of waste commenced in December 2013, and mining through a 'dry-hire' contract was underway in January 2014. To date the mine has produced 200,000 ounces of gold.

Ground Floor, 89 Burswood Rd, Burswood WA 6100
PO Box 4384, Victoria Park WA 6979
Phone: +61 8 9227 5677 | Email: mail@alkane.com.au
www.alkane.com.au  [@alkaneresources](https://twitter.com/alkaneresources)

ASX : ALK
OTCQX : ANLK



Tomingley Gold Operations (TGO)

Resource and Reserves

The Project had a base case start-up life of 7.5 years developed upon an initial open pit and underground operation. The output of the 1Mpa operation is expected to be approximately 400,000oz over the base case life, ie: 50,000 – 60,000 ounces of gold per year. An active exploration program, further underground resources and testing of regional target could see the mine life extended.

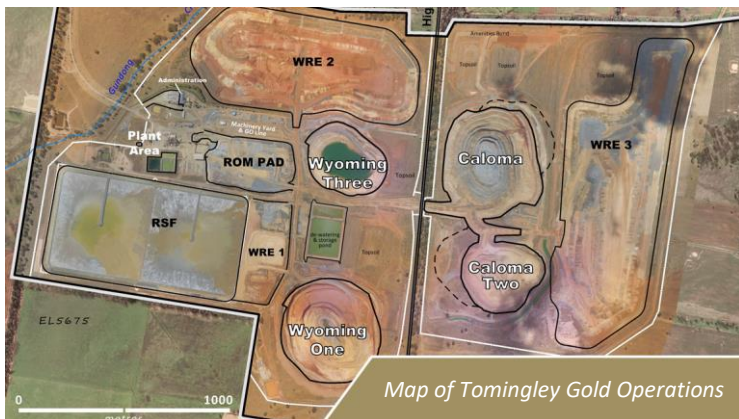
TOMINGLEY GOLD PROJECT MINERAL RESOURCES (as at 30 June 2016)

DEPOSIT	MEASURED		INDICATED		INFERRED		TOTAL		Total Gold (Koz)
	Tonnage (Kt)	Grade (g/t Au)	Tonnage (Kt)	Grade (g/t Au)	Tonnage (Kt)	Grade (g/t Au)	Tonnage (Kt)	Grade (g/t Au)	
Open Pittable Resources (cut off 0.50g/t Au)									
Sub Total	2,670	1.6	3,409	1.7	2,612	1.3	9,392	1.5	454
Underground Resources (cut off 2.50g/t Au)									
Sub Total	179	4.7	305	4.1	448	4.0	932	4.2	125
TOTAL	2,849	1.8	3,714	1.9	3,060	1.7	10,324	1.8	579

TOMINGLEY GOLD PROJECT ORE RESERVES(as at 30 June 2016)

DEPOSIT	PROVED		PROBABLE		TOTAL		Total Gold (Koz)
	Tonnage (Kt)	Grade (g/t Au)	Tonnage (Kt)	Grade (g/t Au)	Tonnage (Kt)	Grade (g/t Au)	
Open Pittable Reserves (cut off 0.50g/t Au)							
Sub Total	2,347	1.4	1,441	1.9	3,788	1.5	191
Underground Reserves (cut off 2.50g/t Au)							
Sub Total	224	4.0	301	3.4	524	3.7	62
TOTAL	2,571	1.6	1,742	2.2	4,312	1.8	253

ASX announcements 21 September 2015, 10 December 2015 and 22 September 2016



Map of Tomingley Gold Operations



Tomingley gold

Disclaimer: This report contains certain forward looking statements and forecasts, including possible or assumed reserves and resources, production levels and rates, costs, prices, future performance or potential growth of Alkane Resources Ltd, industry growth or other trend projections. Such statements are not a guarantee of future performance and involve unknown risks and uncertainties, as well as other factors which are beyond the control of Alkane Resources Ltd. Actual results and developments may differ materially from those expressed or implied by these forward looking statements depending on a variety of factors. Nothing in this report should be construed as either an offer to sell or a solicitation of an offer to buy or sell securities. This document has been prepared in accordance with the requirements of Australian securities laws, which may differ from the requirements of United States and other country securities laws. Unless otherwise indicated, all ore reserve and mineral resource estimates included or incorporated by reference in this document have been, and will be, prepared in accordance with the JORC classification system of the Australasian Institute of Mining, and Metallurgy and Australian Institute of Geosciences.